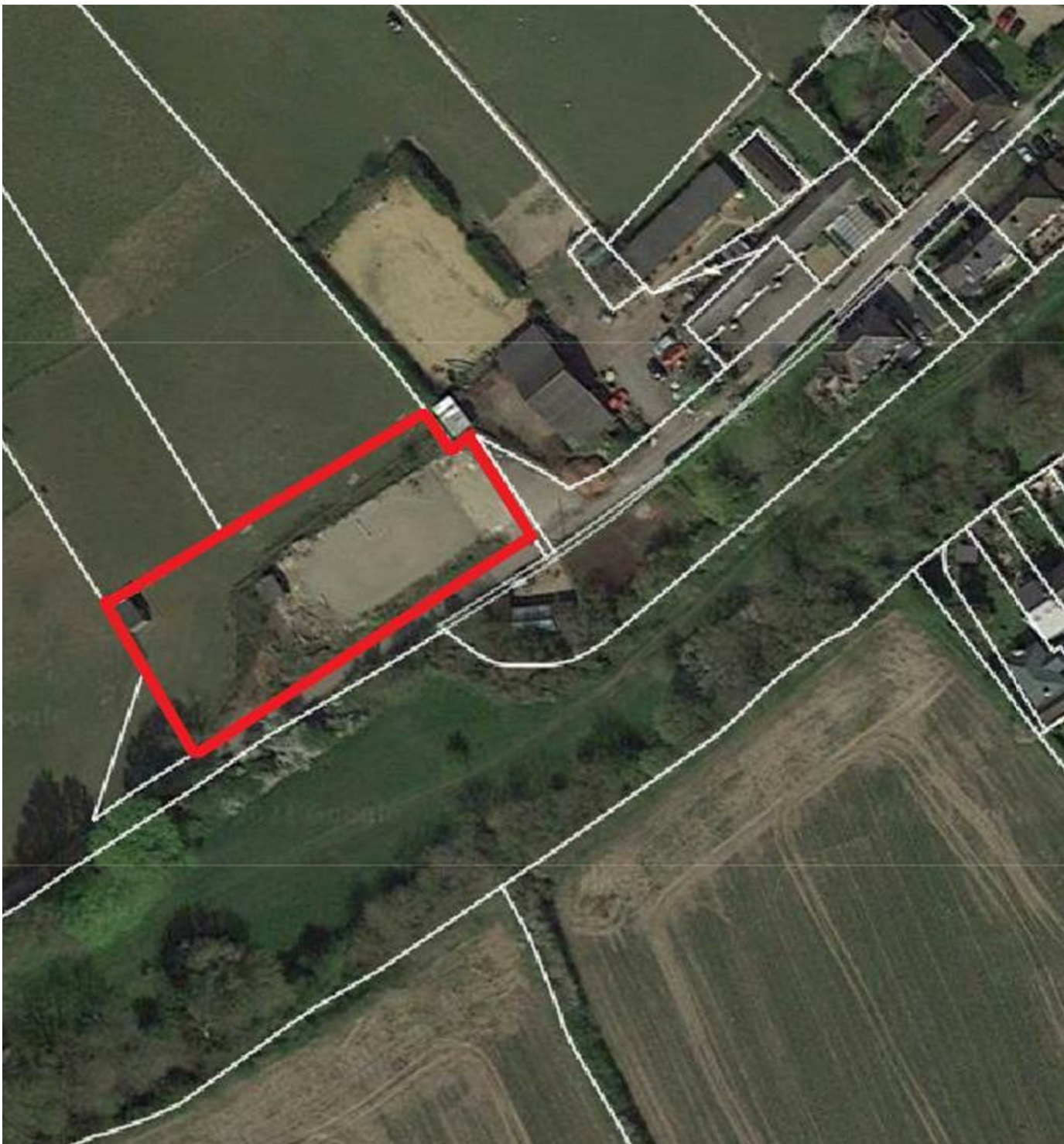




Epping Long Green, Epping, CM16

BUTLER & STAG



Residential Site with Planning Permission.

LOCATION

The site is located within the picturesque village of Epping Green in the Epping Forest district of the County of Essex, England.

Epping tube station 4.3 miles, M11 (Junction 7) 5 miles, M25 (Junction 26) 6.5 miles

Epping Green is a delightful village situated about 4 miles from Epping town centre which offers a comprehensive selection of shops, pubs and restaurants. There are good transport links into London and several well regarded state and private schools are within easy reach.



Freehold

Asking Price £1,300,000

Connections are excellent with the Epping Underground Station being the end of the Central Line and providing regular services to central London on a 24/7 basis taking about 48 minutes to Oxford Circus.

This area is particularly good for schooling with Coopersale Hall Prep School at Epping, Oaklands Prep School at Loughton, Bancroft School at Woodford and Chigwell School all in close proximity.

DESCRIPTION

The site is located to the South of Epping Road facing open countryside. The site is level and lies to the side of small holding and opposite stabling.

PLANNING

Planning Permission has been granted with all matters reserved other than access for an attractive low density development of houses.

4no. 4 bedroom houses.

Further details are available upon request or can be downloaded via Epping Forest District Council using planning reference EPF/2940/15.

TENURE

The site is to be sold freehold.

SERVICES

Main services are believed to be available in the local area.

TITLE

The site is offered for sale freehold with vacant possession.



NOTES

EPF/2940/15

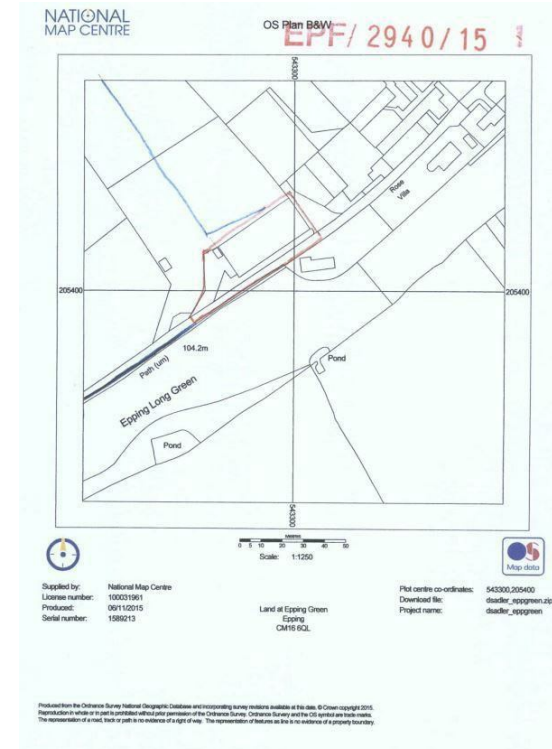
SCALE BARS

REVISIONS

13 NOV 2015

PROPOSED DWELLINGS AND ANCILLARY WORKS at PREVIOUSLY DEVELOPED LAND EPPING GREEN CM16 6AL

DAVID SADLER
 Kicking Dicky
 Patches Bridge
 FINCHFIELD
 Braintree
 Essex CM7 4QN
 Tel: 01371 810810
 DATE - NOVEMBER 2015
 SCALE - 1:200
 DWG. NO. 291/1



IMPORTANT NOTICE - These particulars have been prepared in good faith and they are not intended to constitute part of an offer or contract. We have not performed a structural survey on this property and the services, appliances and specific fittings have not been tested. All photographs, measurements, floor plans and distances referred to are given as a guide and should not be relied upon.

Prepared on behalf of Butler & Stag
Land and New Homes

If you have any further questions
please don't hesitate to contact us on
the details below

BUTLER & STAG

 020 4542 2999

 12 Coppice Row Theydon Bois, Essex, CM16 7ES

 enquires@butlerandstag.com

www.butlerandstag.uk